



**sophisticated
opentype fonts
for designers
creatives
visionaries and
trendsetters**

SPECIMEN MANUAL

PF Wonderland Pro

OpenType® PS

supports Latin, Greek, Cyrillic,

Eastern European, Turkish, Baltic, Vietnamese

617 glyphs

professional kerning for all languages

3 opentype features

1 weight



contents

- 03. about Parachute®
- 04. OpenType® and Parachute® fonts
- 05. how to type multilingual text
- 06. font credits /specs
- 07. the designer
- 08. available styles /font weights
- 09. supported languages
- 10. the full character set
- 11. opentype features
- 12. samples
- 18. acknowledgments

NOTE: All Parachute opentype font names come with the prefix "PF" (e.g. PF Fidelity Pro), a shortcut for "Parachute Fonts"

aboutparachute®

THE COOL, THE CLASSIC, THE ORIGINAL. Parachute® landed in 1999, but it wasn't till 2001 that it started operating as a full-scale type foundry. By then several designers had joined in to form a select group of open-minded, free-spirited individuals/friends. Graphic designers, illustrators, educators, typographers, with fresh ideas and a strong desire to design sophisticated typefaces which reflect current cultures and trends. Parachute® is based in Athens and is the major font supplier to most publishing houses and advertising agencies in Greece. It has built a strong network of valuable relationships with customers in Europe, United States, Canada and Australia, by providing custom font services and corporate font licensing. Its clientele includes multinational companies such as **Ikea, Vodafone, Nestle** and **Unilever**, advertising agencies such as **DDB, Leo Burnett, McCann Erickson, BBDO, Saatchi & Saatchi, Lowe, TBWA, Spot Thompson**, publications such as **National Geographic, Playboy, FHM, Elle, Vogue, Harper's Bazaar, Marie Claire, PC Magazine, Lucky, PC World, Votre Beauté** and many, many others. In the last 5 years Parachute's designers (a.k.a. Parachuters) have won three major typeface design awards, while their work has been featured and extensively presented in design-oriented magazines. The year 2003 marked the beginning of a new era for Parachute® with the release of a major 200-page catalog, which contained Greek and Latin typeface specimens. This catalog/book included several classic revivals of historical importance, as well as many original font designs. Since then an emphasis was placed on multilingual support and OpenType® technology. In the spring of 2004 Parachute's first opentype "Pro" font was released. **"Archive Pro"** an award winning typeface with multilingual support (over 1.350 glyphs/font), kerning for all European languages as well as advanced typographic features, was first presented at the **"Adobe Creative Days 2004"** forum, which was held in Athens, Greece. From then on, all Parachute® fonts have been redesigned to offer multilingual support, which includes major scripts such as Latin, Greek and Cyrillic.


opentype® and parachute® fonts


OpenType® is a new font format developed jointly by Adobe and Microsoft. This technology is becoming the new world standard for font development. There are three major advantages over older formats such as TrueType and Postscript: **1.** Cross-platform compatibility (a single file for both PC and Mac offering absolute compatibility between the two platforms) **2.** Multilingual support (multiple language character sets can be accessed from the same font). This is particularly useful to advertising agencies, publishing houses, multinational corporations and every other company small or large with accounts and products with an international flair. Most Parachute fonts come complete with a full range of characters to support all European languages **3.** Advanced layout features (an exciting function which provides access to advanced typographic features such as small caps, ligatures, oldstyle figures, swashes, etc). They enable the discriminating designer to set text professionally and add a touch of class to the page. Parachute openType fonts with advanced layout features and multilingual support are distinguished from the other "simple" openType fonts by the word "**Pro**" which is part of the font name. The advanced layout features cannot be accessed unless they are supported by your programs. Currently (early 2007), only InDesignCS, IllustratorCS, PhotoshopCS and QuarkXpress7 support these advanced features.

THE DESIGN OF PARACHUTE FONTS. Parachute fonts are designed by individuals who are familiar with Latin, Greek and Cyrillic. These are designers who have studied the particulars of each and every script in order to provide sophisticated, well-balanced, properly kerned and professionally designed typefaces in all different languages. Parachute online fonts are offered exclusively in OpenType format and they are released only after they have been thoroughly tested and reviewed.

How to type Multilingual text

It's never been easier to type or edit multilingual text. All you need is: **1.** a program which supports opentype fonts (see below), **2.** switch your keyboard to the languages you are interested in and **3.** use opentype fonts which support the specific languages (Parachute fonts support all European languages). Please note that if you only need to edit an existing multilingual text i.e. copy/paste or change fonts, you don't have to add or switch keyboards.

HOW TO SWITCH KEYBOARDS. First you add the new languages to the system. The steps are similar on both platforms **1.** On the PC (Windows XP) you go to the <control panel> section and choose <regional and languages options>. Select <languages> and follow the instructions to add the new languages (for earlier versions please refer to their manuals). Once added, you can switch between keyboards through the language bar that appears on the desktop or through a key sequence **2.** On the Mac (MacOsX) you go to <system preferences> and select <international>. Then you choose <input menu> and checkmark the languages you want to add. Once added, you can switch between keyboards through the language palette which appears on the desktop's menu bar or through a key sequence. Please visit Parachute's web site or click on the following link  to go directly to the <international keyboard layouts> support page. View them on screen or download for your reference.

ABOUT GREEK POLYTONIC. Add Greek Polytonic to the system by following above instructions. Once added, you need to know the key combinations for typing your text. Please visit Parachute's web site or click on the following link  to go directly to the <how to type Greek Polytonic support page>. View the typing instructions on screen or download for your reference.

MAJOR PROGRAMS THAT SUPPORT OPENTYPE. Currently (early 2007), the programs known to support OpenType are: InDesignCS, IllustratorCS, PhotoshopCS, Microsoft Office, CorelDraw and QuarkXpress 7.

SYSTEM REQUIREMENTS. Windows 2000 or later, MacOSX or later.

fontcredits

WONDERLAND PRO. Alice in Wonderland. Innocent, emotional, almost childish, looks like it just came out of a fairy tale. The long stems, quirky serifs and loose characters, as well as its youthful energy, establish an emotional attachment to this typeface. Designer Dimitris Foussekis completed this font with a matching series of 62 pictograms the so-called 'Wonderbats'. Now, the brand new 'Pro' version has been expanded to include all European languages by supporting simultaneously Latin, Greek and Cyrillic scripts.

format *opentype PS*

scripts *latin, greek, cyrillic, eastern european, turkish, baltic, vietnamese*

glyphs *617*

kerning *applied to all languages*

pro features *3*

weight *1*

designer *Dimitris Foussekis / Panos Vassiliou*

© 2003-2006

thedesigner

DIMITRIS FOUSSEKIS. He is considered one of the most talented contemporary Greek illustrators. Among his influences are Edmund Guy and Philip Burke. He studied Geology and Paleontology, while he worked as a specialist designer for archeological findings. His designs appear weekly in magazines and often in advertising campaigns. He has designed **MyWay** and **ManicAttack** as well as part of **DaVinci Script** for Parachute, with the most recent being **Wonderland**.

PANOS VASSILIOU. Panos Vassiliou has conducted numerous seminars for leading Canadian companies and institutions such as Bank of Nova Scotia, Royal Bank and Sony Canada. He has organized and promoted several educational and cultural conferences. Two years after his graduation from the University of Toronto/Canada, where he studied Applied Science and Engineering, he pursued a teaching career at George Brown College/Toronto, first in the Information Systems Department and later in the Media & Graphic Arts Department. He has been Creative Director for the Canadian design firm AdHaus, former Publisher of the monthly magazine DNA (Greece) and Secretary-General for the Hellenic Canadian Congress (Ontario, Canada). He has been designing typefaces since 1993, including commercial fonts as well as commissions from **Vodafone**, **Nestlé**, **Ikea** and **National Geographic**. He is regularly invited as a guest speaker to conferences and seminars, to speak on typography and related topics. After moving to Greece, he started Parachute in 1999 setting the base for a typeface library that reflected the works of some of the best contemporary Greek designers, as well as creatives around the world obsessed with type. Some of his favorite designs include **Agora Pro**, **Square Sans Pro**, **Fuel Pro**, **Champion Script Pro**. He received a design award for his typeface **Archive** at the EBFE AWARDS 2004. As early as spring 2004 he released **Archive Pro**, his first opentype font with special typographic features and multilingual support for all European languages including Greek and Cyrillic.

stylesfontweights

Regular A e E f

B e E b

Δ ε E ξ

NOTE: All weights contain the same language range and the full character set as seen on page 10.

supportedlanguages

Following is a list of all major encodings (codepages) and languages supported. This typeface supports over 100 languages simultaneously, integrating within the same font Latin, Greek, Cyrillic, Eastern European, Baltic, Turkish and Vietnamese scripts. If you would like to see a full character set of this typeface (including all special characters), go to the character set section on page 10.

MAJOR CODEPAGES

1252 Latin-1
 1253 Greek
 1250 Eastern European
 1251 Cyrillic
 1254 Turkish
 1257 Baltic
 1258 Vietnamese

MAJOR LANGUAGES

GB English	CZ Czech	UA Ukrainian
GR Greek	HU Hungarian	PL Polish
FR French	RO Romanian	EE Estonian
DE German	FI Finnish	LV Latvian
RU Russian	NL Dutch	SI Slovene
ES Spanish	NO Norwegian	LT Lithuanian
IT Italian	IS Icelandic	ID Indonesian
PT Portuguese	IE Irish	MT Maltese
CS Serbian	AL Albanian	PH Filipino
BG Bulgarian	HR Croatian	TW Taiwanese
TR Turkish	SK Slovak	VN Vietnamese
BY Belorussian	MD Moldovan	
SE Swedish	DK Danish	

supported **OT** features

1. ORNAMENTS/VARIOUS SYMBOLS: This feature may replace the bullet or other characters with any of the available pictograms. All of them are best accessed from the program's 'Glyphs Palette' when available. There is a total of 62 wacky pictograms included with this font (see a full list on page 10)



3. ORDINALS: Replaces the sequence 'No' with the numero character (Nº).

No ▶ N^o

4. SLASHED ZERO: Replaces the regular form of zero with an alternate form which includes a slash through the counter. This is particularly useful when capitals are mixed with numbers in which case capital O may be difficult to distinguish from zero 0.

0 ▶ 0 20 OBJECTS ▶ 20 OBJECTS

NOTE: The characters 'various symbols' are shown as a low-resolution image (zooming is limited).

specimens

13. latin samples

15. greek samples

17. cyrillic samples

latinsamples

What follows is a set of Latin samples for PF Wonderland Pro. Greek and Cyrillic script samples are covered in other sections of this specimen manual. For more samples, please visit our site at www.parachute.gr and try the FonTestDriver™, our advanced evaluation font tool which supports simultaneously Latin, Greek and Cyrillic.

Alice in Wonderland

Alice started to her feet, for it flashed across her mind

that she had never
before seen a rabbit with either a

WAISTCOAT-POCKET,

or a watch to take out of it, and burning

with curiosity, she ran across

the field after it, and fortunately was just in time to see



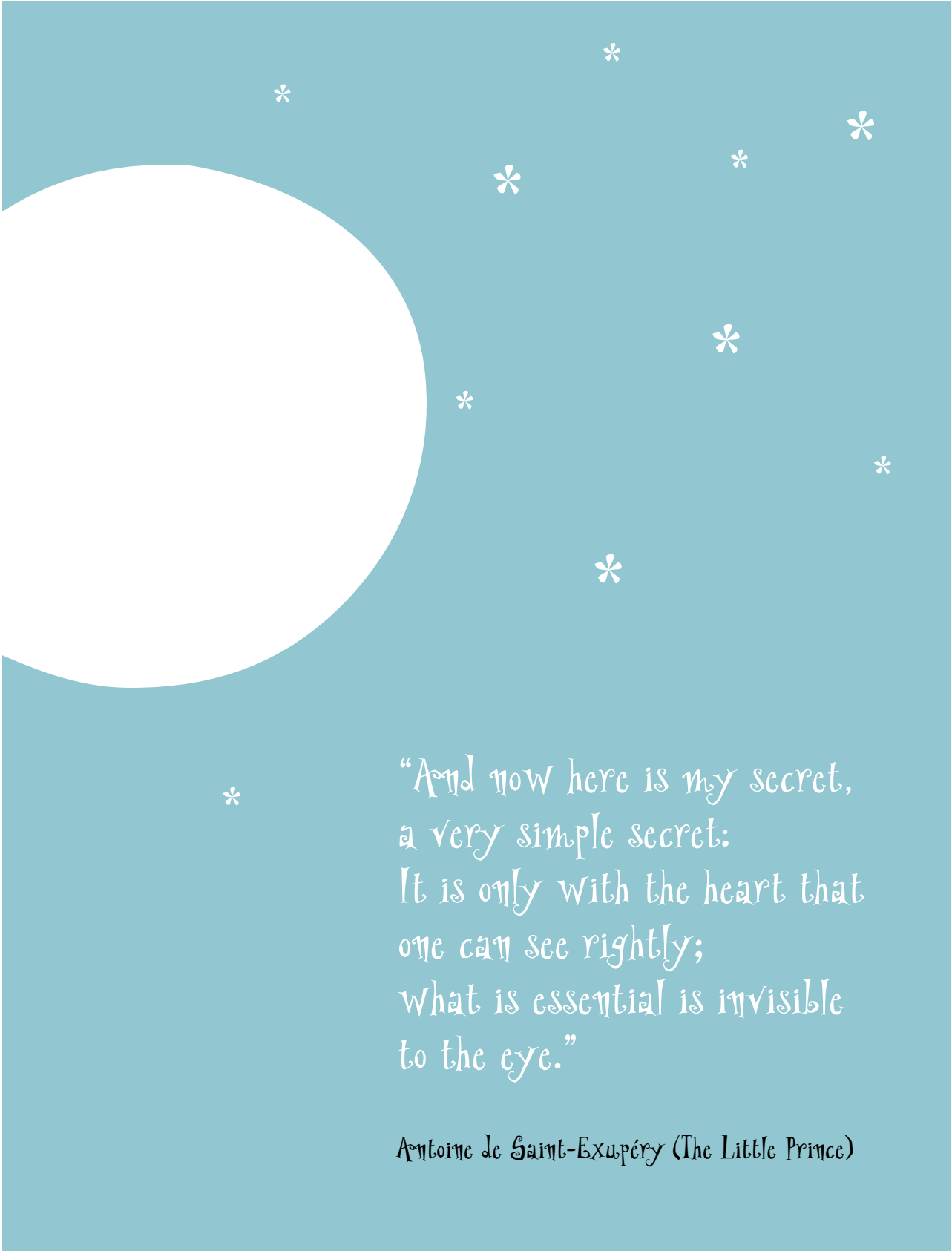
IT POP DOWN A LARGE RABBIT-HOLE

under the hedge. In another moment down went Alice

after it, never once

considering how in the world she was to get out again

NOTE: The characters 'various symbols' are shown as a low-resolution image (zooming is limited).



*

“And now here is my secret,
a very simple secret:
It is only with the heart that
one can see rightly;
what is essential is invisible
to the eye.”

Antoine de Saint-Exupéry (The Little Prince)

greek samples

What follows is a set of Greek samples for PF Wonderland Pro. Latin and Cyrillic script samples are covered in other sections of this specimen manual. For more samples, please visit our site at www.parachute.gr and try the FonTestDriver™, our advanced evaluation font tool which supports simultaneously Latin, Greek and Cyrillic.

Η Αλίκη στην Wonderland

Ένα ήσυχο καλοκαιρινό απόγευμα, ένα κοριτσάκι που το έλεγαν Αλίκη

καθόταν με το γάτο της

στη σκιά μιας βελανιδιάς. Εάφνου, πέρασε από μπροστά της

ΈΝΑ ΑΣΠΡΟ ΚΟΥΝΕΛΙ

που κοιτούσε βιαστικά το ζυπνητήρι του!

Η Αλίκη γεμάτη περιέργεια το ακολούθησε και ωωωπ! γλίστρησε σε

μια μεγάλη κουνελότρυπα.

Ευτυχώς όμως προσγειώθηκε στα μαλακά.




ΣΤΟ ΒΑΘΟΣ ΕΙΔΕ ΜΙΑ ΜΙΚΡΗ ΠΟΡΤΟΥΛΑ

«Τι να'ναι άραγε από πίσω» αναρωτήθηκε. Τότε η πόρτα άνοιξε

κι ένας τυφλοπόντικας της έδωσε

να πιεί ένα μυστηριώδες ποτό. Με την πρώτη γουλιά η Αλίκη έγινε...

NOTE: The characters 'various symbols' are shown as a low-resolution image (zooming is limited).



* “Να λοιπόν το μυστικό μου.
Είναι πάρα πολύ απλό:
μόνο με την καρδιά μπορεί
κάποιος να βλέπει σωστά.
Την ουσία τα μάτια
δεν τη βλέπουν.”

Αντουάν ντε Σαιντ-Εξυπερύ (Ο Μικρός Πρίγκιπας)

cyrillicsamples

What follows is a set of Cyrillic samples for PF Wonderland Pro. Greek and Latin script samples are covered in other sections of this specimen manual. For more samples, please visit our site at www.parachute.gr and try the FonTestDriver™, our advanced evaluation font tool which supports simultaneously Latin, Greek and Cyrillic.

Алиса in Wonderland

Алиса вскочила на ноги, ибо не могла припомнить,

Чтобы прежде ей

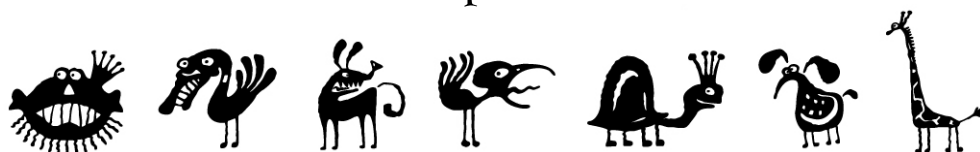
говорилось видеть кролика, у которого

БЫЛ БЫ ЖИЛЕТНЫЙ

карман, не говоря уже о часах, которые

можно отсюда достать.

Так что Алиса, сгорая от любопытства,



побежала по полю вслеп за кроликом,

И КАК РАЗ УСПЕЛА

увидеть, как тот нырнул в большую нору под изгородью.

В следующий момент Алиса нырнула за ним,

NOTE: The characters 'various symbols' are shown as a low-resolution image (zooming is limited).



*

“Вот мой секрет,
он очень прост:
зорко одно лишь сердце.
Самого главного глазами
не увидишь.”

Антуан де Сент-Экзюпери (Маленький Принц)

acknowledgments

TYPEFACES. The typeface used in this specimen manual for body text, headers, footers and page numbering is PF Square Sans Pro. PF Bulletin Sans Pro is used for page titles.

PRODUCTION. This manual was produced using InDesign®CS2, Illustrator®CS2 and Photoshop®CS2 from Adobe® and Word®2004 from Microsoft®. Multilingual sample text was originally set in Microsoft Word for Windows. Final document was created in MacOSX with InDesign®CS2.

TEXT. The main text used for samples has been adapted and translated from the classic novel "Alice's Adventures in Wonderland" (1865) by Lewis Carroll, as well as "The Little Prince" by Antoine de Saint Exupéry, originally published in 1943 by Gallimard. Additional text and samples were derived from the 200-page catalog/book "IDEA-Trendsetting Typography vol. 1" released by Parachute in 2003.

TRADEMARKS. Parachute, the Parachute logo, Agora Sans, Agora Serif, Agora Slab, As-trobats, Alfabeto, Amateur, Baseline, Beatnick, Beau Sans, Bodoni Script, Bulletin Sans, Champion Script, Cosmonut, DaVinci Script, Din Text, Din Display, Fidelity, Fuel, Fusion Sans, PFGoudy Initials, PFGoudy Ornaments, Scandal, Handbook, Haus Square, Highway Sans, Hellenica, Hellenica Serif, Isotext, Kids, Kidstuff, Libera, Manic Attack, Mechanica, Mediterra, Monumenta, Playskool, Psychedelia, Rafskript, Reminder, Square Sans, Signskript, Stamps, Stamp Frames, Synch, Videotext, Wonderland, Wonderbats, are either registered trademarks or trademarks of Parachute and/or Parachute Worldwide. Apple, Mac, Macintosh and TrueType are trademarks of Apple Computer Inc. Adobe, InDesign, Illustrator, Photoshop and PostScript are trademarks of Adobe Systems Incorporated. Microsoft, Windows and OpenType are trademarks of Microsoft Corporation.



Parachute® Worldwide

35 Falirou Street, Athens 11742 GR | T. +30 210 9210220 F. +30 210 9210221
 info@parachute.gr | www.parachute.gr

You may reproduce this manual and distribute it freely, provided you do not edit the document and/or remove the copyright information. Parachute assumes no responsibility or liability for any errors or inaccuracies that may appear in this document. Contents are subject to change without notice.